

# T House

{ **Design** Takane Ezoie **Collaboration** Modourbano architecture  
**Location** Milano, Italy **Total area** 200m<sup>2</sup> **Completion** 2012  
**Photographer** Alessandro Di Gaetano }



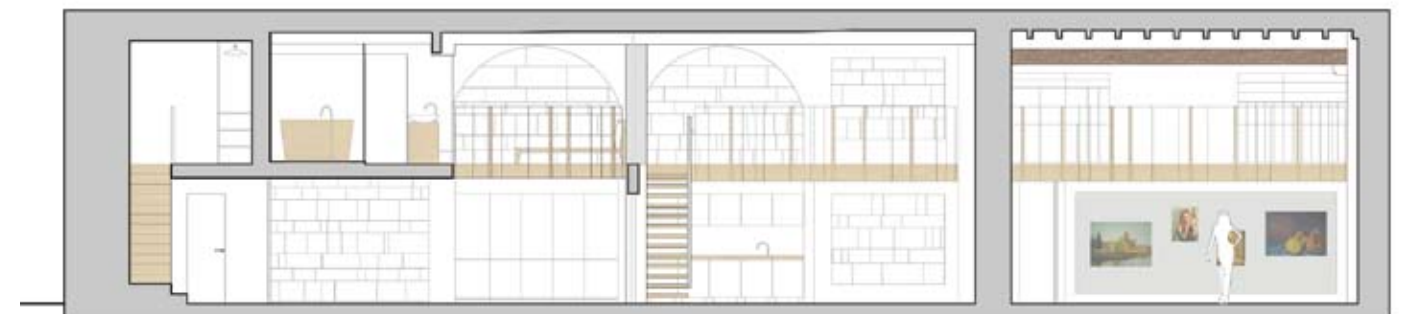
{ The studio, where the designer also the user work for most of the day, needs to have precise characteristics: it has to be roomy, bright and comfortable. It has to give the possibility to meet with her assistants and to move freely inside with the large-size works of art. Next to the studio a little space is designed where is able to exhibit and store the artwork as well as moving it during exhibitions or events. The designer has been fundamentally inspired by a master of contemporary architecture: the museal spaces of Álvaro Siza. So she applied herself very much to give these places comfort as well as neutrality and simplicity. One of the priorities in this house was to have a roomy kitchen where is able to prepare food for a large number of people and cooking. The dining spaces are intentionally empty and have to be useful when things are moved, and most of all, they do not have to suffocate and provoke oppression due to the presence of too many objects. The night space on the mezzanine is an intimate zone, permeable, but inviolable. The main bathroom, reminds the thermal baths of the Japanese tradition. The choice of materials is an echo and the result of a deep research of the designer's homeland where natural materials such as wood and stone assume the function to relax the mind as well as to create a refined atmosphere. The functional layout of the house refers itself to the classical Japanese buildings where everything is half-opened and the spaces are divided by traditional Japanese sliding doors Fusuma or Syouji. From here the idea to have all the spaces planimetrically opened with roomy double volumes to intensify the strong character of this 18 Century Milan space, which, from its prior use as animal stall, has now become an elegant loft. }

Text by Takane Ezoie

**Takane Ezoie** TAKANE EZOE was born near Tokyo, in a coastal city most famous in the art world for Hokusai's wood prints. She graduated from University in Tokyo where she studied History of Art and Performing Arts. She later perfected her painting technique in Florence, and subsequently practiced set design in Milan. Takane is now living and working between Milan and Tokyo, and works as designer, artist and actor. She designed T House in Milan, and now she has new projects in north of Japan. Takane also has been exhibiting her works in museums in Italy and all over the world, and awarded numerous prizes for her art works.

**Modourbano** MODOURBANO is a network of professionals coming from different cultural backgrounds and with wide international experience. Founded in early 2010, MODOURBANO is engaged in the development of innovative & sustainable solutions for contemporary architecture, design. In addition to the design activity, MODOURBANO associates are also committed to knowledge dissemination in the field of urban sustainability, through the organization of cultural events, a diverse production essays, articles and reportages published on manifold media. Headquarters are based in Milan (Italy) and Beijing (P.R.China)

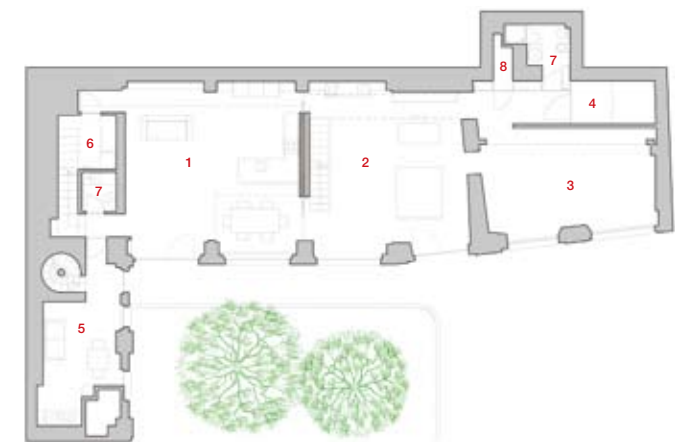




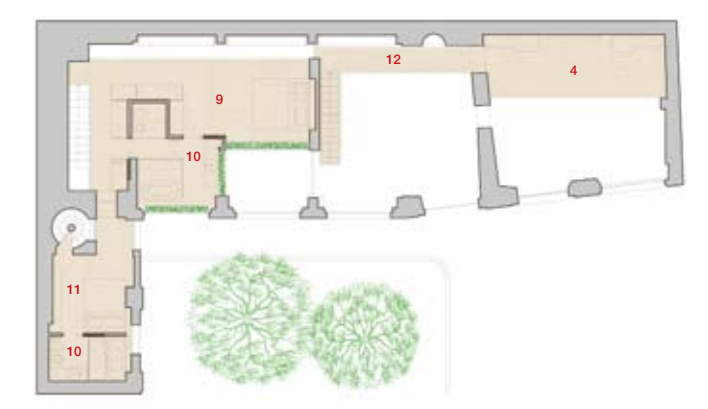
SECTION



- 1 LIVING ROOM / KITCHEN
- 2 ATELIER
- 3 GALLERY
- 4 ART WORK STORAGE
- 5 VISITOR'S LIVING ROOM
- 6 LAUNDRY
- 7 TOILET
- 8 STORAGE
- 9 BEDROOM
- 10 BATHROOM
- 11 VISITOR'S BEDROOM
- 12 CORRIDOR



1ST FLOOR PLAN



2ND FLOOR PLAN